

SETTING  
THE STAGE

# MENTAL HEALTH SERVICES FOR CHILDREN AND YOUTH

**MARCH 2023**  
(2020/21 Data)

[childhealthbc.ca](http://childhealthbc.ca)

**CHILD  
HEALTH<sub>BC</sub>**  
LEAD BENEFACTOR  
**saveonfoods**

## Mental Health & Substance Use Services for Children and Youth: Setting the Stage for Tiers Development

### Contents

1.0	Providers of MH & SU Services for Children and Youth .....	2
2.0	Utilization of Hospital-based Services by Children and Youth for MH & SU Reasons.....	3
2.1	ED Service Utilization.....	4
2.1.1	ED Visits for MH & SU Reasons.....	5
2.1.2	ED Admissions to Hospital for MH and SU Reasons .....	7
2.2	Inpatient Utilization.....	8
2.2.1	Inpatient Discharges for MH & SU Reasons.....	8
3.0	References .....	12
Appendix 1: Map of MCFD Child & Youth Mental Health Teams .....		13
& Inpatient Units in BC.....		13
Appendix 2: ED Visits for MH & SU Reasons by Hospital.....		14
Appendix 3: ED Visits for MH & SU Reasons by ED Tier of Service & Type of Presenting Complaint .		17
Appendix 4: ED Admissions to Hospital for MH or SU Reasons.....		18
Appendix 5: Inpatient Discharges for MH & SU Reasons by Hospital, Age of Child and Most Responsible Physician.....		19
Appendix 6: Map of Inpatient Discharges for MH & SU Reasons.....		23
Appendix 7: HA Operated & Contracted Child & Youth Inpatient Beds in BC.....		24

#### HOW TO CITE THE MENTAL HEALTH SERVICES FOR CHILDREN AND YOUTH MODULE:

We encourage you to share these documents with others & we welcome their use as a reference. Please cite each document in the module in keeping with the citation on the table of contents of each of the three documents. If referencing the full module, please cite as:

Child Health BC. *Mental Health Services for Children and Youth*. Vancouver, BC: Child Health BC, July 2022.

Child Health BC acknowledges the principle authors, Olsen A, O'Donnell M, Davidson J, Thomas-Peter K, Williams, J & the contributions of the following groups: MH Module Development Advisory Group, Provincial MH Module Development Working Group, Task-Specific Working Groups, Provincial MH & Substance Use Working Group, the Child Health BC Steering Committee and the Executive Directors in the Ministry of Child & Family Development. We would also like to thank Keli Anderson from FamilySmart for her valuable input. Appendix 1 lists the participants on each group.

## Mental Health & Substance Use Services for Children and Youth: Setting the Stage for Tiers Development

The Tiers of Service modules for Mental Health (MH) and Substance Use (SU) Services for Children and Youth are made up of three components:

1. *Setting the Stage for Tiers Development (this document)*
2. Tiers in Brief to Support System Planning (high-level description of the tiers, including responsibilities and requirements)
3. Tiers in Full to Support Operational Planning (detailed description of the responsibilities and requirements at each tier)

### 1.0 Providers of MH & SU Services for Children and Youth

Mental health and substance use services for children and youth are provided by psychiatrists (mainly child and adolescent psychiatrists), mental health clinicians (which may include psychologists, social workers, clinical counselors, nurses), psychologists, counsellors, addiction specialists and pediatricians, in partnership with family physicians (FPs), nurse practitioners (NPs), nurses, allied health, Indigenous providers and other members of the health care team. Children/youth and parents are also considered important members of the team and this assumption is relevant throughout this document.

#### Child & Adolescent Psychiatrists

A child and adolescent psychiatrist is a physician who specializes in the diagnosis and the treatment of disorders of thinking, feeling and/or behavior affecting children, adolescents, and their families. It is recognized by the Royal College of Physicians and Surgeons (RCPS) as a sub-specialty of psychiatry. Based on a recent survey (35% response rate), BC has approximately 65-85 child and adolescent psychiatrists, with the highest number of approximately 42 (about 56%) located in Vancouver (including BC Children's Hospital), and lowest number in the Northern Health Authority. Most are practicing in urban settings (primarily in the Lower Mainland) in community mental health, hospitals and/or private practice. The ratio of child & adolescent psychiatrists per child/adolescent in BC is 1:12,000 (recommended ratio as per the Canadian Psychiatric Association is 1:3,800). See Table 1.

**Table 1: BC Child & Adolescent Psychiatrists Distribution by Health Authority**

HA	Child & Adolescent Psychiatrists (+/- RCPS Exam <sup>i</sup> ) (estimated)	General Psychiatrist Whose Practice (10-30%) includes Children & Youth (estimated)	Population, Children/Youth	Children/Youth Ages 0 - 18.9 Yrs	
				# Child & Adolescent Psychiatrist (CAP) per Child/Youth	# CAP + General Psychiatrists per Child/Youth
Interior Health	6	15	136,956	1:22,826	1:6,522
Fraser Health	11	21	383,514	1:34,865	1:11,985
Vancouver Coastal	25	21	191,741	1:4,565	1:2,779
PHSA - BCCH	17	6			
Island Health	10	6	140,666	1:14,067	1:8,792
Northern Health	1	9	66,384	1:66,384	1:6,638
<b>Total BC</b>	<b>70</b>	<b>78</b>	<b>919,261</b>	<b>1:13,132</b>	<b>1:6,211</b>

Source: Estimates extrapolated from Davidson, J. Child and Adolescent Psychiatrist Survey Results, 2016.

<sup>i</sup> Those who identify as having child & adolescent psychiatry training which includes those who have subspecialty training in child & adolescent psychiatry.

### **Mental Health Clinicians**

Clinicians in mental health have degrees in Social Work, Counseling Psychology, Child & Youth Care or Nursing with a specialized focus (continuing education and experience) in mental health and substance use. Psychologists are also included as mental health clinicians. Clinicians may be accessed privately, in hospitals or assessment/treatment centres, or through community services such as a Child & Youth Mental Health Team. Children and youth with mental health issues are primarily seen and have their care managed by a mental health clinician, who may consult with a child psychiatrist, pediatrician or multi-disciplinary team as needed. Mental Health Clinicians also have the capacity to provide care to children, youth and their families who have concurrent substance use issues. Mental health clinicians are trained in a variety of therapeutic modalities in order to engage and improve health and resiliency of children, youth and their families.

See Appendix 1 for a map of the locations of Ministry of Child and Family Development (MCFD) Child & Youth Mental Health Teams in BC.

### **Addictions Specialists & Counselors**

An addiction specialist is a physician and/or a psychiatrist, who has demonstrated by education, experience, and examination the requisite knowledge and skills to provide prevention, screening, intervention and treatment for substance use and addiction. Addictions counselors may have completed college or university training, in addition to a certificate in addictions and related experience in the field. Children, youth and their families experiencing substance use issues are primarily seen in their community, and have their care managed by an addiction's counselor, who may consult with an addictions specialist, psychiatrist, pediatrician, or multi-disciplinary team as needed.

### **Pediatricians and Family Physicians**

There are an estimated 378 general pediatricians, 6,884 family medicine physicians and 540 nurse practitioners in BC, many of whom provide care to children and youth with mental health and substance use issues. Refer to the medical module for details.

## **2.0 Utilization of Hospital-based Services by Children and Youth for MH & SU Reasons**

This section provides provincial-level data on the utilization of hospital-based services by children and youth for MH & SU reasons. Data is for children and youth aged 0 - 18.9 unless otherwise stated.

Data is available for children and youth utilizing BC's Emergency Departments (EDs) and inpatient services. Unfortunately, no comparable provincial-level data exists for community-based MH & SU services (including services provided by the Ministry of Child and Family Development) or hospital ambulatory services.

Data sources used for this section include:

1. ED data:

- a. Health Authorities Management Information System (HAMIS) reporting tool
  - Provides numbers of visits for the 109 hospitals in BC providing ED care. Data which breaks down the number of visits by age or other variables is not available.
- b. National Ambulatory Care Reporting System (NACRS).
  - Provides detailed information about ED visits for all participating hospitals (e.g., age and type of presenting complaint).
  - NACRS data is available for 30 sites in BC. In 2020/21, these sites represented 28% of the 109 EDs in BC and 63% of the total ED visits to BC hospitals.
  - NACRS participating sites include: 2/60 of the T1 EDs, 11/29 of the T2 EDs, 13/17 of the T3 EDs and 1/1 for each of the T4, T5 and T6 EDs. One site was not assessed under the Tiers of Service.

2. Inpatient data:

- The Discharge Abstract Database (DAD) reporting tool is utilized by all hospitals in BC to report inpatient discharges.

Highlights of the data are provided in the next section. Detailed data and a visual representation (map) are available in Appendices 2 - 6. Appendix 7 provides a list of hospitals with HA operated designated pediatric beds (including MH & SU beds).

## 2.1 ED Service Utilization

The presenting complaints listed below were utilized to capture "mental health and substance use" ED visits. The list was extracted from the presenting complaint field in the Canadian ED Information System Presenting Complaint List (v.5.0, April 2017):

<b>Mental Health (351-400)</b> <ul style="list-style-type: none"> <li>• Depression/suicidal/deliberate self-harm</li> <li>• Anxiety/situational crisis</li> <li>• Hallucinations/delusions</li> <li>• Insomnia</li> <li>• Violent/homicidal behaviour</li> <li>• Social problem</li> <li>• Bizarre behaviour</li> <li>• Concern for patient's welfare</li> <li>• Pediatric disruptive behaviour</li> </ul>	<b>Gastrointestinal (251–300)</b> <ul style="list-style-type: none"> <li>• Anorexia*</li> </ul> <b>Substance Misuse (751–800)</b> <ul style="list-style-type: none"> <li>• Substance misuse/intoxication</li> <li>• Overdose ingestion</li> <li>• Substance withdrawal</li> </ul>
--	--

\*Could be GI, mental health or other reasons. There is no "eating disorder" category.

## 2.1.1 ED Visits for MH & SU Reasons

### 2.1.1.2 Total ED Visits, Pediatric ED Visits & Pediatric MH & SU ED Visits (all hospitals)

In 2020/21, there were approximately 2.15 million visits to EDs in B.C. hospitals (HAMIS data). Percentages from the 2020/21 NACRS data were applied to the 2020/21 BC ED visit data to help understand the utilization of EDs by children and youth ages 0 – 18.9, including children and youth presenting with MH or SU complaints.

The HAMIS/NACRS data suggests:

- There are an estimated 266,349 pediatric visits (children and youth ages 0 - 18.9 years) to BC EDs each year (~730 visits per day). This represents 12% of total ED visits.
- There are an estimated 20,121 pediatric visits each year that present with a MH or SU complaint (55 visits per day). This represents 7.5% of total pediatric ED visits (<1% of total ED visits).
- Of the pediatric visits with MH & SU complaints, two-thirds presented with a MH complaint.
- See Table 2 for HA level data and Appendix 2 for hospital-level data.

**Table 2: Total ED Visits, Pediatric ED Visits (estimates) & Pediatric MH & SU ED Visits (estimates), All Hospitals, 2020/21**

HA	Total ED & Pediatric ED Visits			Pediatric MH & SU ED Visits			
	ED Visits (Pediatrics & Adult)	Est Pediatric ED Visits	% Ped ED Visits/Total Visits	Est Ped MH ED Visits	Est Ped SU ED Visits	Est Ped MH&SU ED Visits	% MH&SU ED Visits/Total Ped Visits
IHA	534,317	61,305	11%	3,303	1,376	4,679	8%
FHA	602,956	73,196	12%	3,566	1,413	4,979	7%
VCH	366,276	21,944	6%	1,248	665	1,912	9%
Is H	398,412	42,799	11%	3,337	1,320	4,657	11%
NHA	217,544	25,367	12%	1,570	633	2,203	9%
PHSA	30,396	30,034	99%	1,326	336	1,662	6%
<b>Total</b>	<b>2,149,901</b>	<b>254,646</b>	<b>12%</b>	<b>14,350</b>	<b>5,742</b>	<b>20,092</b>	<b>8%</b>

Notes re Table 2:

1. Total ED visits (adults, youth & children) were based on 2017/18 HAMIS data.
2. Estimated pediatric ED visits were based on 2017/18 NACRS data for sites where NACRS data was available. Where NACRS data was not available, the provincial average for pediatric ED/total ED visits was utilized (excludes "outlier sites" as listed in Appendix 2).
3. Estimated pediatric MH & SU ED visits were based on 2017/18 NACRS data for sites where NACRS data was available. Where NACRS data was not available, the provincial averages for pediatric MH/pediatric ED visits, pediatric SU/pediatric ED visits and pediatric MH&SU visits/pediatric ED visits were utilized (excludes "outlier sites" as listed in Appendix 2).
4. Pediatric visits include visits for 0 to 18.9 yrs of age

### 2.1.1.3 ED Visits by Children and Youth with a MH or SU Complaint by Age (NACRS reporting hospitals)

29% of children and youth presenting to the ED with a MH or SU complaint were aged 16 to 18.9 years. 16% of children and youth are in this age group.

The lowest proportion (7%) of children and youth presenting to the ED with a MH or SU complaint were aged 0 - 5.9 years (2% of MH visits and 22% of SU visits). 31% of children and youth are in this age group.

**Table 3: ED Visits by Children and Youth with a MH or SU Complaint by Age, NACRS Reporting Hospitals, 2020/21**

Age	BC Population		Pediatric ED Visits		Ped MH Visits			Ped SU Visits			Total Ped MH&SU Visits		
	#	%	#	% by Age	#	% Ped ED Visits	% Ped MH ED Visits	#	% Ped ED Visits	% Ped SU ED Visits	#	% Ped ED Visits	% Ped MH&SU ED Visits
0 - 5.9	274,217	30%	63,508	38%	178	<1%	2%	636	<1%	22%	814	1%	7%
6 - 11.9	294,259	32%	38,048	23%	859	2%	10%	91	<1%	3%	950	2%	8%
12 - 16.9	246,708	27%	41,628	25%	4,996	12%	59%	1423	3%	48%	6,419	15%	56%
17 - 18.9	104,077	11%	23,050	14%	2,501	11%	29%	806	3%	27%	3,307	14%	29%
<b>Total</b>	<b>919,261</b>	<b>100%</b>	<b>166,234</b>	<b>100%</b>	<b>8,534</b>	<b>5%</b>	<b>100%</b>	<b>2,956</b>	<b>2%</b>	<b>100%</b>	<b>11,490</b>	<b>7%</b>	<b>100%</b>

#### 2.1.1.4 ED Visits by Children and Youth with a MH or SU Complaint by Complaint Type (NACRS reporting hospitals)

The most common type of MH & SU complaint was depression/suicidal/deliberate self-harm (46%). Another 26% were for reasons of overdose and substance misuse/intoxication.

**Table 4: ED Visits by Children and Youth with a MH & SU Complaint, Ages 0 - 18.9 Yrs, NACRS Reporting Hospitals, 2020/21**

Presenting Complaint	Ped ED Visits	% MH&SU/ Total Ped ED Visits
Depression/suicidal/deliberate self harm	5,256	46%
Overdose ingestion	1,845	16%
Anxiety/situational crisis	1,135	10%
Substance misuse/intoxication	1,014	9%
Bizarre behaviour	590	5%
Violent/homicidal behaviour	418	4%
Pediatric disruptive behaviour	380	3%
Concern for patient's welfare	357	3%
Hallucinations/delusions	206	2%
Anorexia	120	1%
Social problem	100	1%
Substance withdrawal	42	0%
Insomnia	27	0%
<b>Grand Total</b>	<b>11,490</b>	<b>100%</b>

#### 2.1.1.5 ED Visits by Children and Youth with a MH or SU Complaint by ED Tier of Service (NACRS reporting hospitals)

The proportion of children and youth presenting with a MH or SU complaint was highest at the T1 EDs (n=2) and lowest at the T6 ED. The percentage at the other tiers was relatively similar.



**Table 5: Proportion of ED Visits by Children and Youth with a MH or SU Complaint by ED Tier of Service, Ages 0 - 18.9 Yrs, NACRS Reporting Hospitals, 2020/21**

Tier	# Sites	Ped ED Visits		Ped MH Visits			Ped SU Visits			Total Ped MH/SU Visits		
		#	Avg Per Site	#	Avg Per Site	% Ped ED Visits	#	Avg Per Site	% Ped ED Visits	#	Avg Per Site	% Ped ED Visits
N/A*	1	1,906	1,906	97	97	5.1%	76	76	4.0%	173	173	9.1%
T1	2	1,811	906	133	67	7.3%	61	31	3.4%	194	97	10.7%
T2	11	32,085	2,917	1,331	121	4.1%	553	50	1.7%	1,884	171	5.9%
T3	13	65,858	5,066	3,595	277	5.5%	1,388	107	2.1%	4,983	383	7.6%
T4	1	9,360	9,360	727	727	7.8%	223	223	2.4%	950	950	10.1%
T5	1	25,180	25,180	1,305	1,305	5.2%	362	362	1.4%	1,667	1667	6.6%
T6	1	30,034	30,034	1,346	1,346	4.5%	293	293	1.0%	1,639	1639	5.5%
<b>Total</b>	<b>29</b>	<b>166,234</b>	<b>5,732</b>	<b>8,534</b>	<b>294</b>	<b>5.1%</b>	<b>2,956</b>	<b>102</b>	<b>1.8%</b>	<b>11,490</b>	<b>396</b>	<b>6.9%</b>

\* Note: One NACRS-reporting site was not assessed.

See Appendix 3 for a listing of ED visits for MH & SU reasons by ED Tier of Service and type of presenting complaint.

## 2.1.2 ED Admissions to Hospital for MH and SU Reasons

### 2.1.2.1 ED Admissions to Hospital for MH & SU Reasons (NACRS reporting hospitals)

~25% of children and youth who presented with a MH or SU complaint were admitted to hospital. This compares to an average of 6% for children and youth presenting with all types of conditions.

A higher percentage of children and youth presenting with a MH complaint were admitted to hospital than with a SU complaint (26% vs 21%).

**Table 6: Pediatric ED Admissions & Pediatric MH & SU Admissions, Ages 0 - 18.9 Yrs, NACRS Reporting Hospitals, 2020/21**

HA	Pediatric Visits/Admissions			Pediatric MH Visits/Admissions			Pediatric SU Visits/Admissions			Pediatric MH&SU Visits/Admissions		
	# Visits	# Admissions	% Admitted	# Visits	# Admissions	% Admitted	# Visits	# Admissions	% Admitted	# Visits	# Admissions	% Admitted
IHA	15,022	1,100	7%	777	278	36%	337	120	36%	1,114	398	36%
FHA	73,196	3,168	4%	3,257	776	24%	1,186	210	18%	4,443	986	22%
VCH	13,159	695	5%	684	206	30%	280	55	20%	964	261	27%
Is H	30,355	1913	6%	2113	495	23%	760	131	17%	2,873	626	22%
NHA	4,468	259	6%	357	130	36%	100	25	25%	457	155	34%
PHSA	30,034	2,967	10%	1,346	310	23%	293	87	30%	1,639	397	24%
<b>Total</b>	<b>166,234</b>	<b>10,102</b>	<b>6%</b>	<b>8,534</b>	<b>2,195</b>	<b>26%</b>	<b>2,956</b>	<b>628</b>	<b>21%</b>	<b>11,490</b>	<b>2,823</b>	<b>25%</b>

### 2.1.2.2 ED Admissions to Hospital for MH & SU Reasons by Age (NACRS reporting hospitals)

Admissions from ED for MH & SU reasons were most common in youth aged 12 - 16.9 and 17 - 18.9. Admissions for MH & SU reasons accounted for 50% and 50% of all pediatric ED admissions in these age groups. See Appendix 4 for hospital-level data.



**Table 7: Proportion of Admissions via ED with MH & SU Presenting Complaint by Age Group, NACRS Reporting Hospitals, 2020/21**

	Pediatric ED Admissions		Pediatric MH Admissions			Pediatric SU Admissions			Pediatric MH&SU Admissions		
Age	#	% Ped ED Admissions	#	% in Age Group	% Ped MH Admissions	#	% in Age Group	% Ped MH Admissions	#	% in Age Group	% Ped MH Admissions
0 to 5.9	3,203	32%	15	1%	0%	70	11%	2%	85	3%	3%
6 to 11.9	1,644	16%	116	5%	7%	16	3%	1%	132	5%	8%
12 to 16.9	3,579	35%	1401	64%	39%	371	59%	10%	1,772	63%	50%
17 to 18.9	1,676	17%	663	30%	40%	171	27%	10%	834	30%	50%
<b>Grand Total</b>	<b>10,102</b>	<b>100%</b>	<b>2,195</b>	<b>100%</b>	<b>22%</b>	<b>628</b>	<b>100%</b>	<b>6%</b>	<b>2,823</b>	<b>100%</b>	<b>28%</b>

## 2.2 Inpatient Utilization

### 2.2.1 Inpatient Discharges for MH & SU Reasons

This section includes 2020/21 inpatient discharges in which a mental health condition was identified as the most responsible diagnosis - i.e., any ICD-10 code starting with "F". This includes the following:

Code	Description
F00-F09	Organic, including symptomatic, mental disorders.
F10-F19	Mental and behavioral disorders due to psychoactive substance abuse.
F20-F29	Schizophrenia, schizotypal and delusional disorders.
F30-F39	Mood (affective) disorders.
F40-F48	Neurotic, stress-related and somatoform disorders.
F50-F59	Behavioral syndromes associated with physiological disturbances and physical factors*
F60-F69	Disorders of adult personality and behavior
F70-F79	Mental retardation
F80-F89	Disorders of psychological development
F90-F98	Behavioral emotional disorders with onset usually occurring in childhood or adolescence
F99-F99	Unspecified mental disorder (F99)

\*Includes eating disorders, anorexia nervosa, atypical anorexia nervosa, bulimia nervosa, atypical bulimia nervosa, overeating associated with other psychological disturbances, vomiting associated with other psychological disturbances and other eating disorders (Pica, psychogenic loss of appetite).

Source: [https://secure.cihi.ca/free\\_products/2022%20ICD10CA%20PDF.zip](https://secure.cihi.ca/free_products/2022%20ICD10CA%20PDF.zip)

### 2.2.1.1 Inpatient Discharges with a MH Condition by Most Responsible Physician and Age

A MH condition was identified as the most responsible diagnosis for 4,017 inpatient discharges in 2020/21 (an average of 12 per day). A psychiatrist or pediatric psychiatrist was the most responsible physician (MRP) for 2,970 (74%) of these children and youth and a family physician or pediatrician for 829 (21%).

31% of discharges were youth aged 17 - 18.9 yrs (11% of children and youth are in this age group) and 64% were aged 12 - 16.9 yrs (27% of children and youth are in this age group).

**Table 8: Inpatient Discharges, Children and Youth with a MH Condition as the Most Responsible Diagnosis by MRP, Ages 0 - 18.9 Yrs, 2020/21**

	MH Discharges					% Total Pediatric MH & SU Discharges
	Age in Years					
Most Responsible Physician	0 - 5.9	6 - 11.9	12 - 16.9	17 - 18.9	Total	
Psychiatry	1	85	1,317	939	2,342	58%
Pediatric Psychiatry		50	538	40	628	16%
Pediatrics	5	45	426	38	514	13%
Family Practice /General Practice	1	13	176	125	315	8%
Emergency Medicine		2	28	61	91	2%
Adolescent Medicine		1	46	12	59	1%
Pediatric Neurology	8	9	27	4	48	1%
Internal Medicine				15	15	0%
Critical Care Medicine	1		2	2	5	0%
Grand Total	16	205	2,560	1,236	4,017	100%
% Total Discharges	<1%	5%	64%	31%	100%	
Population, 0 to 18.9 yrs	274,217	294,259	246,708	104,077	919,261	
% Population, 0 to 18.9 yrs	30%	32%	27%	11%		

Details of inpatient discharges for MH & SU reasons by hospital, MRP and age of child is available in Appendix 5.

### 2.2.1.2 Inpatient Discharges and Types of MH Conditions

Depressive episode, reaction to severe stress/adjustment disorders and other anxiety disorders were responsible for 30% of inpatient discharges. Depressive episodes were the most common.

**Table 9: Inpatient Discharges, Children and Youth with a MH Condition by Type of Condition, Ages 0 - 18.9 Yrs, 2020/21**

Most Responsible Diagnosis Category	Discharges		Days	
	#	%	#	%
Depressive episode	875	22%	3,959	15%
Reaction to severe stress, and adjustment disorders	681	17%	2,611	10%
Other anxiety disorders	339	8%	1,293	5%
Eating disorders	292	7%	4,647	17%
Unspecified nonorganic psychosis	199	5%	1,780	7%
Bipolar affective disorder	172	4%	2,423	9%
Specific personality disorders	147	4%	608	2%
Pervasive developmental disorders	118	3%	936	3%
Recurrent depressive disorder	111	3%	665	2%
Unspecified mood [affective] disorder	108	3%	450	2%
Mental and behavioural disorders due to use of alcohol	95	2%	142	1%
Hyperkinetic disorders	90	2%	646	2%
Mental and behavioural disorders due to multiple drug use and use of other psychoactive substances	78	2%	312	1%
Schizophrenia	71	2%	2,276	8%
Conduct disorders	71	2%	270	1%
Obsessive-compulsive disorder	61	2%	567	2%
Persistent mood [affective] disorders	55	1%	281	1%
Mental and behavioural disorders due to use of cannabinoids	52	1%	300	1%

Most Responsible Diagnosis Category	Discharges		Days	
	#	%	#	%
Mental and behavioural disorders due to use of other stimulants, including caffeine	43	1%	165	1%
Dissociative [conversion] disorders	38	1%	138	1%
Somatoform disorders	36	1%	90	0%
Other mood [affective] disorders	32	1%	114	0%
Mental and behavioural disorders due to use of opioids	32	1%	115	0%
Acute and transient psychotic disorders	23	1%	132	0%
Schizoaffective disorders	20	0%	621	2%
Emotional disorders with onset specific to childhood	15	0%	58	0%
Disorders of social functioning with onset specific to childhood and adolescence	14	0%	213	1%
Other behavioural and emotional disorders with onset usually occurring in childhood and adolescence	14	0%	71	0%
Manic episode	13	0%	53	0%
Mental and behavioural disorders due to use of hallucinogens	13	0%	41	0%
Specific developmental disorders of scholastic skills	11	0%	248	1%
Mixed disorders of conduct and emotions	11	0%	40	0%
Unspecified disorder of psychological development	9	0%	107	0%
Mental and behavioural disorders due to use of cocaine	9	0%	52	0%
Mild mental retardation	9	0%	110	0%
Other	60	1%	388	1%
<b>Total</b>	<b>4,017</b>	<b>100%</b>	<b>26,922</b>	<b>100%</b>

### 2.2.1.3 Inpatient Discharges by HA of Treating Hospital and HA of Child's Home Residence for Children and Youth with MH & SU Diagnoses

93% of children and youth with MH conditions were admitted to a hospital in their home HA. 88% of inpatient days were in a hospital within a child/youth's home HA. The percentage of children and youth with MH conditions admitted to a hospital in their home HA ranged from 86% (FH) to 97% (Island Health). The percentage of inpatient days ranged from 76% (FH) to 98% (VCH).

34% of discharges and 27% of inpatient days were to a hospital in FH while 10% of discharges and 13% of inpatient days were to a hospital in NH. 13% of discharges and 18% of days were to BC Children's Hospital.

**Table 10: Inpatient Discharges, Children and Youth with a MH Condition by HA of Treating Hospital & HA of Child's Home Residence, Ages 0 - 18.9 Yrs, 2020/21**

HA of Treating Hospital	HA of Child's Home Residence					Total, excl	Unknown	Total	% Prov D/C'es
	IHA	FHA	VCHA	Isld HA	NHA	Unkn			
Interior	766	6	3	2	4	781	17	798	20%
Fraser	2	1,164	19	1	4	1190	13	1203	30%
Vancouver Coastal		13	279	3		295	9	304	8%
PHSA (BCCH)	14	160	315	16	14	519	7	526	13%
Island Health		1	1	767		769	28	797	20%
Northern	8	2		1	374	385	4	389	10%
<b>Total</b>	<b>790</b>	<b>1346</b>	<b>617</b>	<b>790</b>	<b>396</b>	<b>3,939</b>	<b>78</b>	<b>4,017</b>	<b>100%</b>
<b>% D/C'es in Home HA</b>	<b>97%</b>	<b>86%</b>	<b>96%</b>	<b>97%</b>	<b>94%</b>	<b>93%</b>			
% Prov D/C'es	20%	34%	15%	20%	10%	98%			
Pop'n, 0 to 18.9 Yrs	136,956	383,514	191,741	140,666	66,384	919,261			
% Pop'n, 0 to 18.9 Yrs	15%	42%	21%	15%	7%	100%			
<b>D/C'es/1,000 Children &amp; Youth</b>	<b>5.8</b>	<b>3.5</b>	<b>3.2</b>	<b>5.6</b>	<b>6.0</b>	<b>4.3</b>			

**Table 11: Inpatient Days, Children and Youth with a MH Condition by HA of Treating Hospital & HA of Child's Home Residence, Ages 0 - 18.9 Yrs, 2020/21**

HA of Treating Hospital	HA of Child's Home Residence					Total, excl	Unknown	Total	% Prov Days
	IHA	FHA	VCHA	Isld HA	NHA	Unkn			
Interior	4,759	20	8	3	72	4,862	79	4,941	18%
Fraser	5	5,551	68	10	15	5,649	83	5,732	21%
Vancouver Coastal		85	1,365	6		1,456	65	1,521	6%
PHSA (BCCH)	109	1,578	2,741	133	202	4,763	203	4,966	18%
Island Health		6	2	6,261		6,269	104	6,373	24%
Northern	64	17		29	3,252	3,362	27	3,389	13%
<b>Total</b>	<b>4,937</b>	<b>7,257</b>	<b>4,184</b>	<b>6,442</b>	<b>3,541</b>	<b>26,361</b>	<b>561</b>	<b>26,922</b>	<b>100%</b>
<b>% Days in Home HA</b>	<b>96%</b>	<b>76%</b>	<b>98%</b>	<b>97%</b>	<b>92%</b>	<b>91%</b>			
% Prov Days	18%	27%	16%	24%	13%	98%			
Pop'n, 0 to 18.9 Yrs	136,956	383,514	191,741	140,666	66,384	919,261			
% Pop'n, 0 to 18.9 Yrs	15%	42%	21%	15%	7%	100%			
<b>Days/1,000 Children &amp; Youth</b>	<b>36.0</b>	<b>18.9</b>	<b>21.8</b>	<b>45.8</b>	<b>53.3</b>	<b>28.7</b>			

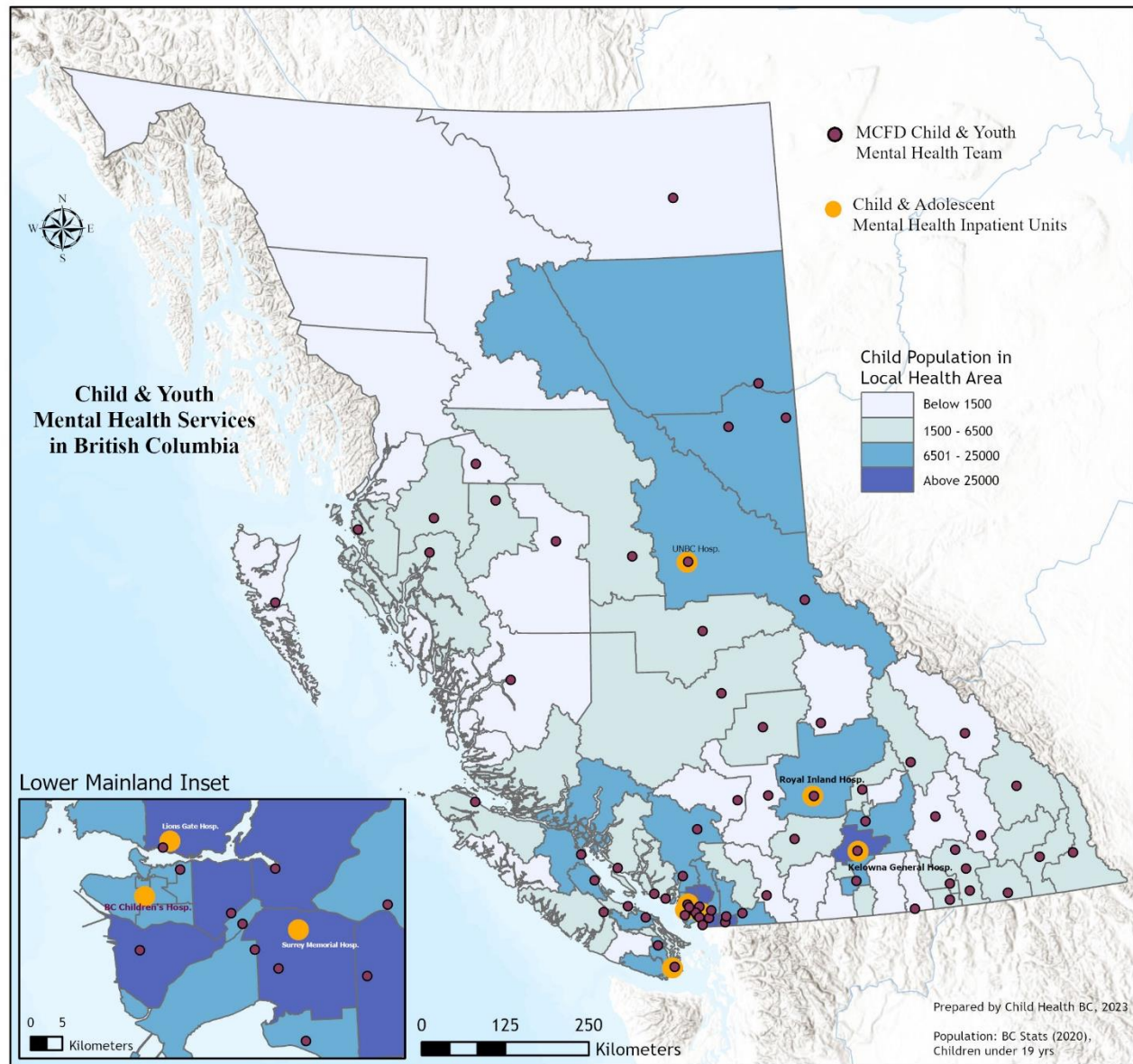
*Note:*

For the above tables, children and youth from VCH that were admitted to either a VCH hospital or BCCH were assumed to have received the service in their home HA.

## 3.0 References

1. Health Authorities Management Information System (HAMIS) reporting tool, Ministry of Health, 2017/18.
2. National Ambulatory Care Reporting System (NACRS), Canadian Institute for Health Information (CIHI), 2017/18.
3. Discharge Abstract Database (DAD) reporting tool, Canadian Institute for Health Information (CIHI), 2017/18.

## Appendix 1: Map of MCFD Child & Youth Mental Health Teams & Inpatient Units in BC





## Appendix 2: ED Visits for MH & SU Reasons by Hospital

- Includes children and youth ages 0 - 18.9 years.
- Total ED visits (adults, youth & children) were based on 2020/21 HAMIS data.
- Estimated pediatric ED visits were based on 2020/21 NACRS data for sites where NACRS data was available. Where NACRS data was not available, the provincial average for pediatric ED/total ED visits was utilized (excludes "outlier sites" as listed below).
- Estimated pediatric MH & SU ED visits were based on 2020/21 NACRS data for sites where NACRS data was available. Where NACRS data was not available, the provincial averages for pediatric MH/pediatric ED visits, pediatric SU/pediatric ED visits and pediatric MH&SU visits/pediatric ED visits were utilized (excludes "outlier sites" as listed below).
- "Outlier sites" excluded from the calculation of provincial averages were Vancouver General, St Paul's, Mt St Joseph's, Royal Jubilee and BC Children's Hospitals.
- Grey highlight = no inpatient beds; Yellow highlight = NACRS reporting site.

HSDA	Hosp Name	Total & Pediatric ED Visits			Pediatric MH & SU ED Visits			
		ED Visits (Pediatrics & Adult)	Est Pediatric ED Visits	% Ped ED Visits/ Total Visits	Est Ped MH ED Visits	Est Ped SU ED Visits	Est Ped MH&SU ED Visits	% MH&SU ED Visits/ Total Ped Visits
Interior Health Authority								
East Kootenay	Creston Valley Hospital	12,113	1,410	12%	74	32	106	7%
	East Kootenay Regional Hospital	19,433	2,262	12%	119	51	169	7%
	Elk Valley Hospital	9,917	1,154	12%	61	26	86	7%
	Elkford Health Centre	637	74	12%	4	2	6	7%
	Golden & District Hospital	8,331	970	12%	51	22	73	7%
	Invermere & District Hospital	9,990	1,163	12%	61	26	87	7%
	Sparwood Health Centre	3,500	407	12%	21	9	31	7%
Kootenay Boundary	Arrow Lakes Hospital	3,856	449	12%	24	10	34	7%
	Boundary Hospital	10,079	1,173	12%	62	26	88	7%
	Castlegar & Dist Health Ctre / Castlegar UPCC	12,293	1,431	12%	75	32	107	7%
	Edgewood Health Centre	1,670	194	12%	10	4	15	7%
	Kootenay Boundary Regional Hospital	13,495	1,571	12%	82	35	118	7%
	Kootenay Lake Hospital	12,246	1,426	12%	75	32	107	7%
	Slocan Community Health Centre	2,171	253	12%	13	6	19	7%
	Victorian Comm Health Centre of Kaslo	1,490	173	12%	9	4	13	7%
Okanagan	Kelowna General Hospital	72,514	7,842	11%	490	183	673	9%
	Orchard Medical Urgent and Primary Care Centre	36,696	4,272	12%	224	96	320	7%
	Penticton Regional Hospital	33,432	3,892	12%	204	87	292	7%
	Princeton General Hospital	5,296	616	12%	32	14	46	7%
	South Okanagan General Hospital	13,563	1,579	12%	83	35	118	7%
	South Similkameen Health Centre	2,888	336	12%	18	8	25	7%
	Vernon Jubilee Hospital / Vernon UPCC	66,192	7,705	12%	404	173	577	7%
	West Kelowna UPCC	8,208	955	12%	50	21	72	7%
Thompson Cariboo Shuswap	100 Mile District General Hospital	12,494	1,454	12%	76	33	109	7%
	Alexis Creek Health Centre	811	94	12%	5	2	7	7%
	Ashcroft & District General Hospital	1,864	217	12%	11	5	16	7%
	Barriere Health Centre	1,235	144	12%	8	3	11	7%
	Blue River Health Centre	173	20	12%	1	0	2	7%
	Cariboo Memorial Hospital	15,600	1,816	12%	95	41	136	7%
	Chase & District Health Centre	3,262	380	12%	20	9	28	7%
	Dr. Helmcken Memorial Hospital	2,741	319	12%	17	7	24	7%
	Kamloops Urgent Family Care Centre	26,796	3,119	12%	164	70	234	7%



HSDA	Hosp Name	Total & Pediatric ED Visits			Pediatric MH & SU ED Visits			
		ED Visits (Pediatrics & Adult)	Est Pediatric ED Visits	% Ped ED Visits/ Total Visits	Est Ped MH ED Visits	Est Ped SU ED Visits	Est Ped MH&SU ED Visits	% MH&SU ED Visits/ Total Ped Visits
	Lillooet Hospital & Health Centre	5,242	610	12%	32	14	46	7%
	Nicola Valley Hospital & Health Centre	11,158	1,299	12%	68	29	97	7%
	Queen Victoria Hospital	7,849	914	12%	48	21	68	7%
	Royal Inland Hospital	64,199	7,180	11%	386	152	538	7%
	Shuswap Lake General Hospital	19,356	2,253	12%	118	51	169	7%
	St. Bartholomew's Health Centre	1,527	178	12%	9	4	13	7%
<b>Total, IHA</b>		<b>534,317</b>	<b>61,305</b>	<b>11%</b>	<b>3,303</b>	<b>1,376</b>	<b>4,679</b>	<b>8%</b>
<b>Fraser Health Authority</b>								
Fraser East	Abbotsford Regional Hospital	62,434	8,003	13%	462	182	644	8%
	Chilliwack General Hospital	53,881	6,853	13%	370	130	500	7%
	Fraser Canyon Hospital	10,452	1,306	12%	31	15	46	4%
	Mission Memorial Hospital	18,248	2,251	12%	62	45	107	5%
Fraser North	Burnaby Hospital	62,168	4,013	6%	165	100	265	7%
	Eagle Ridge Hospital & Health Care Centre	42,965	4,847	11%	80	95	175	4%
	Ridge Meadows Hospital	38,352	4,867	13%	251	123	374	8%
	Royal Columbian Hospital	65,923	6,054	9%	437	114	551	9%
Fraser South	Delta Hospital	25,939	1,822	7%	25	42	67	4%
	Langley Memorial Hospital	41,240	4,421	11%	187	125	312	7%
	Peace Arch District Hospital	44,003	3,579	8%	109	46	155	4%
	Surrey Memorial Hospital	137,351	25,180	18%	1387	396	1783	7%
<b>Total, FHA</b>		<b>602,956</b>	<b>73,196</b>	<b>12%</b>	<b>3,566</b>	<b>1,413</b>	<b>4,979</b>	<b>7%</b>
<b>Vancouver Coastal Health Authority</b>								
North Shore / Coast Garibaldi	Bella Coola General Hospital	3,423	398	12%	21	9	30	7%
	Lions Gate Hospital	51,095	5,217	10%	352	176	528	10%
	Pemberton Health Centre	5,919	689	12%	36	15	52	7%
	Powell River General Hospital	16,453	1,915	12%	100	43	143	7%
	R.W. Large Memorial Hospital	2,897	337	12%	18	8	25	7%
	Sechelt Hospital/shishalh Hospital	15,533	1,808	12%	95	41	135	7%
	Squamish General Hospital	15,946	1,856	12%	97	42	139	7%
	Whistler Health Centre	15,295	1,780	12%	93	40	133	7%
Richmond	Richmond Hospital	43,537	3,785	9%	178	75	253	7%
Vancouver	Mount Saint Joseph's (Providence)	26,985	832	3%	5	3	8	1%
	St. Paul's Hospital (Providence)	70,828	899	1%	64	111	175	19%
	U.B.C. Health Sciences Centre	18,591	1,447	8%	25	3	28	2%
	Vancouver General Hospital	79,774	979	1%	163	99	262	27%
<b>Total, VCH</b>		<b>366,276</b>	<b>21,944</b>	<b>6%</b>	<b>1,248</b>	<b>665</b>	<b>1,912</b>	<b>9%</b>
<b>Island Health Authority</b>								
Central Van Island	Bamfield Health Centre	1,875	218	12%	11	5	16	7%
	Chemainus Health Care Centre	8,252	961	12%	50	22	72	7%
	Cowichan District Hospital	28,462	3,163	11%	179	124	303	10%
	Ladysmith Community Health Centre	13,963	1,625	12%	85	37	122	7%
	Nanaimo Regional General Hospital	59,491	6,011	10%	472	181	653	11%
	Oceanside Health Centre	25,413	2,958	12%	155	67	222	7%
	Tofino General Hospital	6,023	701	12%	37	16	53	7%
	West Coast General Hospital	19,765	1,906	12%	100	43	143	7%

HSDA	Hosp Name	Total & Pediatric ED Visits			Pediatric MH & SU ED Visits			
		ED Visits (Pediatrics & Adult)	Est Pediatric ED Visits	% Ped ED Visits/ Total Visits	Est Ped MH ED Visits	Est Ped SU ED Visits	Est Ped MH&SU ED Visits	% MH&SU ED Visits/ Total Ped Visits
North Van Island	Cormorant Island Health Centre	1,293	151	12%	8	3	11	7%
	Gold River Health Centre	2,831	330	12%	17	7	25	7%
	Kyuquot Health Centre	1709	199	12%	10	4	15	7%
	North Island Hosp, Campbell River & Dist	22,734	2,404	11%	180	61	241	10%
	North Island Hospital, Comox Valley	31,563	3,288	10%	146	70	216	7%
	Port Alice Hospital	978	114	12%	6	3	9	7%
	Port Hardy Hospital	6,610	769	12%	40	17	58	7%
	Port McNeill & District Hospital	4,035	470	12%	25	11	35	7%
	Tahsis Health Centre	2,661	310	12%	16	7	23	7%
South Van Island	Lady Minto/Gulf Islands Hospital	8,882	1,034	12%	54	23	77	7%
	Royal Jubilee Hospital	52,652	2,375	5%	276	82	358	15%
	Saanich Peninsula Hospital	21,795	1,848	8%	23	29	52	3%
	Victoria General Hospital	55,047	9,360	17%	779	275	1054	11%
	Westshore Urgent Primary Care Centre	22,378	2,605	12%	666	234	900	35%
Total, Isld HA		398,412	42,799	11%	3,337	1,320	4,657	11%
Northern Health Authority								
Northeast	Chetwynd General Hospital	6,164	718	12%	38	16	54	7%
	Dawson Creek & District Hospital	15,193	1,769	12%	93	40	133	7%
	Fort Nelson General Hospital	3,449	401	12%	21	9	30	7%
	Fort St. John General Hospital	21,924	2,552	12%	134	57	191	7%
	Hudson's Hope Gething Health Centre	162	19	12%	1	0	1	7%
	Tumbler Ridge Health Centre	1,471	171	12%	9	4	13	7%
Northern Interior	Fraser Lake Health Centre	7,113	828	12%	43	19	62	7%
	GR Baker Memorial Hospital	13,228	1,540	12%	81	35	115	7%
	Lakes District Hospital & Health Centre	8,364	974	12%	51	22	73	7%
	Mackenzie & District Hospital	5,069	590	12%	31	13	44	7%
	McBride & District Hospital	1,595	186	12%	10	4	14	7%
	St. John Hospital	9,175	1,068	12%	56	24	80	7%
	Stuart Lake Hospital	4,161	484	12%	25	11	36	7%
	The University Hosp of Northern BC	38,004	4,468	12%	474	163	637	14%
	Valemount Health Centre	4,237	493	12%	26	11	37	7%
Northwest	Atlin Health Centre	2,260	263	12%	14	6	20	7%
	Bulkley Valley District Hospital	11,222	1,306	12%	69	29	98	7%
	Haida Gwaii Hospital and Health Centre	1,819	212	12%	11	5	16	7%
	Houston Health Centre	3,179	370	12%	19	8	28	7%
	Kitimat General Hospital	17,213	2,004	12%	105	45	150	7%
	Mills Memorial Hospital	17,148	1,996	12%	105	45	150	7%
	Northern Haida Gwaii Hospital	2,413	281	12%	15	6	21	7%
	Prince Rupert Regional Hospital	13,794	1,606	12%	84	36	120	7%
	Stewart General Hospital	2,113	246	12%	13	6	18	7%
	Stikine Health Centre	1,454	169	12%	9	4	13	7%
	Wrinch Memorial Hospital	5,620	654	12%	34	15	49	7%
Total, NHA		217,544	25,367	12%	1,570	633	2,203	9%
PHSA	BC Children's Hospital	30,396	30,034	99%	1,326	336	1,662	6%
Total, PHSA		30,396	30,034	99%	1,326	336	1,662	6%
GRAND TOTAL		2,149,901	254,646	12%	14,350	5,742	20,092	8%

## Appendix 3: ED Visits for MH & SU Reasons by ED Tier of Service & Type of Presenting Complaint

- NACRS (CIHI Portal), 2020/21 data.
- Includes children and youth ages 0 - 18.9 years.
- Includes hospitals assessed through Tiers of Service and submitting to NACRS (29 hospitals).

Tier/ Presenting Complaint	Visits	% Visits for Tier
<b>T1 ED</b>	<b>194</b>	<b>100%</b>
Depression/suicidal/deliberate self harm	98	51%
Substance misuse/intoxication	29	15%
Overdose ingestion	28	14%
Bizarre behaviour	13	7%
Anxiety/situational crisis	12	6%
Violent/homicidal behaviour	8	4%
Substance withdrawal	4	2%
Anorexia	1	1%
Social problem	1	1%
<b>T2 ED</b>	<b>1,884</b>	<b>100%</b>
Depression/suicidal/deliberate self harm	808	43%
Overdose ingestion	324	17%
Anxiety/situational crisis	237	13%
Substance misuse/intoxication	208	11%
Bizarre behaviour	108	6%
Concern for patient's welfare	53	3%
Violent/homicidal behaviour	42	2%
Pediatric disruptive behaviour	27	1%
Hallucinations/delusions	27	1%
Social problem	19	1%
Anorexia	18	1%
Substance withdrawal	7	0%
Insomnia	6	0%
<b>T3 ED</b>	<b>4,983</b>	<b>100%</b>
Depression/suicidal/deliberate self harm	2,265	45%
Overdose ingestion	857	17%
Anxiety/situational crisis	502	10%
Substance misuse/intoxication	467	9%
Bizarre behaviour	239	5%
Violent/homicidal behaviour	207	4%
Concern for patient's welfare	131	3%
Pediatric disruptive behaviour	118	2%
Hallucinations/delusions	97	2%
Social problem	37	1%
Anorexia	29	1%
Substance withdrawal	23	0%
Insomnia	11	0%

Tier/ Presenting Complaint	Visits	% Visits for Tier
<b>T4 ED</b>	<b>950</b>	<b>100%</b>
Depression/suicidal/deliberate self harm	466	49%
Overdose ingestion	120	13%
Anxiety/situational crisis	107	11%
Substance misuse/intoxication	102	11%
Pediatric disruptive behaviour	38	4%
Concern for patient's welfare	32	3%
Violent/homicidal behaviour	27	3%
Bizarre behaviour	22	2%
Hallucinations/delusions	16	2%
Anorexia	11	1%
Social problem	6	1%
Insomnia	2	0%
Substance withdrawal	1	0%
<b>T5 ED</b>	<b>1,667</b>	<b>100%</b>
Depression/suicidal/deliberate self harm	781	47%
Overdose ingestion	263	16%
Anxiety/situational crisis	152	9%
Bizarre behaviour	137	8%
Violent/homicidal behaviour	112	7%
Substance misuse/intoxication	96	6%
Hallucinations/delusions	33	2%
Concern for patient's welfare	31	2%
Pediatric disruptive behaviour	28	2%
Social problem	22	1%
Anorexia	6	0%
Substance withdrawal	3	0%
Insomnia	3	0%
<b>T6 ED</b>	<b>1,639</b>	<b>100%</b>
Depression/suicidal/deliberate self harm	785	48%
Overdose ingestion	229	14%
Pediatric disruptive behaviour	165	10%
Concern for patient's welfare	105	6%
Anxiety/situational crisis	99	6%
Bizarre behaviour	67	4%
Substance misuse/intoxication	63	4%
Anorexia	55	3%
Hallucinations/delusions	31	2%
Violent/homicidal behaviour	19	1%
Social problem	15	1%
Insomnia	5	0%
Substance withdrawal	1	0%
<b>Grand Total</b>	<b>11,317</b>	<b>-</b>

## Appendix 4: ED Admissions to Hospital for MH or SU Reasons

Children and youth ages 0 - 18.9 yrs

Source: NACRS, 2020/21

Health Authority/Site	ED Pediatric Admissions	ED MH Admissions		ED SU Admissions		ED MH&SU Admissions	
		#	% MH/Peds Admissions	#	% SU/Peds Admissions	#	% MH&SU/Peds Admissions
<b>Interior Health</b>	<b>1,100</b>	<b>278</b>	<b>25%</b>	<b>120</b>	<b>11%</b>	<b>398</b>	<b>36%</b>
Kelowna General Hospital	638	171	27%	86	13%	257	40%
Royal Inland Hospital	462	107	23%	34	7%	141	31%
<b>Fraser Health</b>	<b>3,168</b>	<b>776</b>	<b>24%</b>	<b>210</b>	<b>7%</b>	<b>986</b>	<b>31%</b>
Abbotsford Regional Hospital	704	186	26%	44	6%	230	33%
Burnaby Hospital	96	48	50%	10	10%	58	60%
Chilliwack General Hospital	115	62	54%	22	19%	84	73%
Delta Hospital	10	0	0%	0	0%	0	0%
Eagle Ridge Hospital	8	0	0%	0	0%	0	0%
Fraser Canyon Hospital	2	0	-	0	-	0	-
Langley Memorial Hospital	214	51	24%	13	6%	64	30%
Mission Memorial Hospital	3	0	0%	0	0%	0	0%
Peace Arch Hospital	41	12	29%	5	12%	17	41%
Ridge Meadows Hospital	109	42	39%	8	7%	50	46%
Royal Columbian Hospital	572	166	29%	27	5%	193	34%
Surrey Memorial Hospital	1,294	209	16%	81	6%	290	22%
<b>Vancouver Coastal Health</b>	<b>695</b>	<b>206</b>	<b>30%</b>	<b>55</b>	<b>8%</b>	<b>261</b>	<b>38%</b>
Lions Gate Hospital	341	98	29%	24	7%	122	36%
Mount Saint Joseph Hospital	6	0	0%	0	0%	0	0%
St. Paul's Hospital	31	9	29%	2	6%	11	35%
The Richmond Hospital	192	58	30%	19	10%	77	40%
UBC Hospital	0	0	-	0	-	0	-
Vancouver General Hospital	125	41	33%	10	8%	51	41%
<b>Island Health</b>	<b>1913</b>	<b>495</b>	<b>26%</b>	<b>131</b>	<b>7%</b>	<b>626</b>	<b>33%</b>
Cowichan District Hospital	161	49	30%	13	8%	62	39%
Nanaimo Regional General Hospital	374	110	29%	35	9%	145	39%
Royal Jubilee Hospital	76	44	58%	5	7%	49	64%
Saanich Peninsula Hospital	4	0	0%	0	0%	0	0%
The North Island Hospital - Campbell River	101	14	14%	6	6%	20	20%
The North Island Hospital - Comox Valley	114	23	20%	8	7%	31	27%
Victoria General Hospital	1042	236	23%	60	6%	296	28%
West Coast General Hospital	41	19	46%	4	10%	23	56%
<b>Northern Health</b>	<b>259</b>	<b>130</b>	<b>50%</b>	<b>25</b>	<b>10%</b>	<b>155</b>	<b>60%</b>
University Hospital of Northern BC	259	130	50%	25	10%	155	60%
<b>Provincial Health Services Authority</b>	<b>2,967</b>	<b>310</b>	<b>10%</b>	<b>87</b>	<b>3%</b>	<b>397</b>	<b>13%</b>
BC Children's Hospital	2,967	310	10%	87	3%	397	13%
<b>Total</b>	<b>10,102</b>	<b>2,195</b>	<b>22%</b>	<b>628</b>	<b>6%</b>	<b>2,823</b>	<b>28%</b>

## Appendix 5: Inpatient Discharges for MH & SU Reasons by Hospital, Age of Child and Most Responsible Physician

Children and youth ages 0 - 18.9 years old

Source: 2020/21 data, Discharge Abstract Database (DAD)

	Inpatient Discharges					Inpatient Days
	Age of Child					
HA / Facility / Most Responsible Physician	0 to 5.99	6 to 11.99	12 to 16.99	17 to 18.99	Grand Total	
Interior	1	40	488	269	798	4,941
100 Mile District General Hospital			2		2	7
Family Practice / General Practice Medicine			2		2	7
Arrow Lakes Hospital				1	1	4
Family Practice / General Practice Medicine				1	1	4
Cariboo Memorial Hospital		2	7	9	18	31
Family Practice / General Practice Medicine		2	7	8	17	30
Other				1	1	1
East Kootenay Regional Hospital		2	32	20	54	249
Psychiatry			13	12	25	84
General Pediatrics		2	15	8	25	148
Family Practice / General Practice Medicine			4		4	17
Elk Valley Hospital			2		2	4
Family Practice / General Practice Medicine			2		2	4
Golden and District Hospital				2	2	6
Family Practice / General Practice Medicine				2	2	6
Kelowna General Hospital	1	8	181	91	281	2,794
Psychiatry		4	139	68	211	2,436
General Pediatrics	1	4	41	9	55	322
Family Practice / General Practice Medicine			1	14	15	36
Kootenay Boundary Regional Hospital		5	43	18	66	335
General Pediatrics		4	33	6	43	206
Family Practice / General Practice Medicine		1	10	2	13	62
Psychiatry				10	10	67
Kootenay Lake Hospital		1	1	2	4	6
Family Practice / General Practice Medicine		1	1	2	4	6
Lillooet Hospital And Health Centre			3		3	7
Family Practice / General Practice Medicine			3		3	7
Penticton Regional Hospital		1	44	22	67	274
General Pediatrics		1	40	5	46	176
Psychiatry			4	15	19	95
Family Practice / General Practice Medicine				2	2	3
Queen Victoria Hospital				1	1	1
Family Practice / General Practice Medicine				1	1	1
Royal Inland Hospital		13	95	59	167	674
Psychiatry		13	87	57	157	587
General Pediatrics			8	1	9	86
Family Practice / General Practice Medicine				1	1	1
Shuswap Lake General Hospital		1	6	7	14	19
Family Practice / General Practice Medicine		1	6	7	14	19
Vernon Jubilee Hospital		7	72	37	116	530
Psychiatry		7	67	37	111	476
General Pediatrics			4		4	47
Family Practice / General Practice Medicine			1		1	7
Fraser Health Authority	1	48	745	409	1,203	5,732

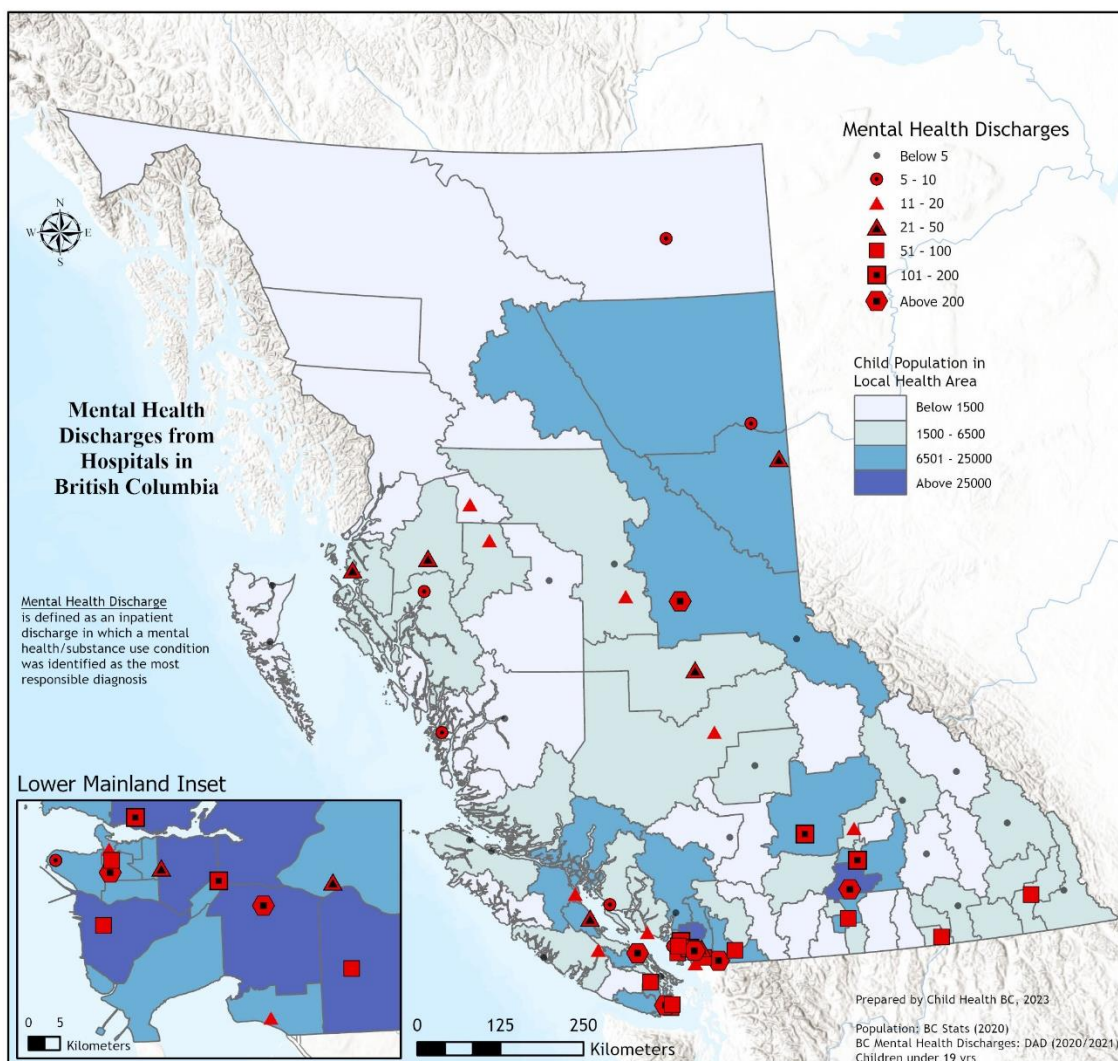
	Inpatient Discharges					Inpatient Days
	Age of Child					
HA / Facility / Most Responsible Physician	0 to 5.99	6 to 11.99	12 to 16.99	17 to 18.99	Grand Total	
Abbotsford Regional Hospital and Cancer Centre		8	154	68	230	585
Psychiatry		7	135	68	210	522
General Pediatrics		1	19		20	63
Burnaby Hospital			18	27	45	201
Psychiatry			18	26	44	198
Family Practice / General Practice Medicine				1	1	3
Chilliwack General Hospital		1	35	49	85	246
Psychiatry		1	35	47	83	244
Family Practice / General Practice Medicine				2	2	2
Langley Memorial Hospital		2	29	32	63	264
Psychiatry			19	26	45	106
General Pediatrics		2	10	2	14	128
Family Practice / General Practice Medicine				3	3	27
Other				1	1	3
Peace Arch District Hospital			5	12	17	77
Psychiatry			5	9	14	62
Family Practice / General Practice Medicine				3	3	15
Ridge Meadows Hospital And Health Care Centre		6	16	21	43	167
Psychiatry		6	16	21	43	167
Royal Columbian Hospital		5	124	68	197	809
Psychiatry		3	108	65	176	574
General Pediatrics		2	16	2	20	203
Other				1	1	32
Surrey Memorial Hospital	1	26	364	132	523	3,383
Psychiatry		26	349	127	502	3,153
General Pediatrics	1		14		15	150
Family Practice / General Practice Medicine			1	5	6	80
Vancouver Coastal Health Authority	2	8	138	156	304	1,521
Bella Coola General Hospital				1	1	2
Family Practice / General Practice Medicine				1	1	2
Lions Gate Hospital	1	5	85	37	128	598
Psychiatry		4	72	34	110	406
General Pediatrics	1	1	13	1	16	188
Other				2	2	4
Powell River General Hospital		1	2	7	10	43
Family Practice / General Practice Medicine		1	2	4	7	35
Psychiatry				3	3	8
R.W. Large Memorial Hospital			1	5	6	11
Family Practice / General Practice Medicine			1	5	6	11
Richmond Hospital		2	39	28	69	178
Psychiatry		2	38	26	66	164
Family Practice / General Practice Medicine			1	2	3	14
Sechelt Hospital			10	6	16	23
Family Practice / General Practice Medicine			6	3	9	12
Psychiatry			4	3	7	11
Squamish General Hospital			1		1	1
Family Practice / General Practice Medicine			1		1	1
St. Paul's Hospital	1			14	15	162
Psychiatry	1			12	13	108
Other				2	2	54
UBC Health Sciences Centre				5	5	87

	Inpatient Discharges					Inpatient Days
	Age of Child					
HA / Facility / Most Responsible Physician	0 to 5.99	6 to 11.99	12 to 16.99	17 to 18.99	Grand Total	
Psychiatry				5	5	87
Vancouver General Hospital				53	53	416
Psychiatry				51	51	379
Other				2	2	37
Island Health Authority	3	48	476	270	797	6,373
Campbell River and District General Hospital			10	4	14	117
Family Practice / General Practice Medicine			4	4	8	21
General Pediatrics			6		6	96
Comox Valley Hospital		4	17	21	42	226
Psychiatry		2	14	21	37	210
General Pediatrics		2	3		5	16
Cowichan District Hospital		3	45	36	84	372
Psychiatry		1	21	25	47	284
Other		1	10	8	19	19
Family Practice / General Practice Medicine		1	12	3	16	51
General Pediatrics			2		2	18
Lady Minto / Gulf Islands Hospital			1	1	2	2
Family Practice / General Practice Medicine			1	1	2	2
Nanaimo Regional General Hospital		8	87	105	200	1,112
Other		1	16	53	70	86
Psychiatry			20	49	69	612
General Pediatrics		7	50		57	383
Family Practice / General Practice Medicine			1	3	4	31
Queen Alexandra Centre for Children's Health		14	64	7		2
Psychiatry		14	64	7		2
Royal Jubilee Hospital	1		1	76		8
Psychiatry				69		8
Other	1		1	7		2,135
Tofino General Hospital				1		2,135
Family Practice / General Practice Medicine				1		658
Victoria General Hospital	2	19	241	5		535
Psychiatry		10	132			123
General Pediatrics	2	9	108			1
Family Practice / General Practice Medicine				5		1
Other			1		1	1,675
West Coast General Hospital			7	13	20	802
General Pediatrics			6	3	9	835
Psychiatry			1	6	7	37
Family Practice / General Practice Medicine				4	4	1
Port Hardy Hospital			1		1	65
Family Practice / General Practice Medicine			1		1	10
Port Mcneill And District Hospital			2	1	3	42
Family Practice / General Practice Medicine			2	1	3	13
Northern Health Authority	1	12	275	101	389	3,389
Bulkley Valley District Hospital	1		10	8	19	59
Family Practice / General Practice Medicine	1		10	8	19	59
Burns Lake and District Hospital			3		3	12
Family Practice / General Practice Medicine			3		3	12
Dawson Creek and District Hospital			11	9	20	173
Family Practice / General Practice Medicine			11	1	12	29
Psychiatry				8	8	144
Fort Nelson General Hospital			5		5	9



	Inpatient Discharges					Inpatient Days
	Age of Child					
HA / Facility / Most Responsible Physician	0 to 5.99	6 to 11.99	12 to 16.99	17 to 18.99	Grand Total	
Family Practice / General Practice Medicine			5		5	9
Fort St. John General Hospital		1	6	3	10	47
Family Practice / General Practice Medicine		1	6	2	9	46
Psychiatry				1	1	1
G.R. Baker Memorial Hospital			15	9	24	159
Psychiatry			9	7	16	123
Family Practice / General Practice Medicine			6	2	8	36
Kitimat General Hospital		2	4		6	14
Family Practice / General Practice Medicine		2	4		6	14
Masset Hospital				1	1	1
Family Practice / General Practice Medicine				1	1	1
McBride and District Hospital			2		2	3
Family Practice / General Practice Medicine			2		2	3
Mills Memorial Hospital			22	10	32	245
Family Practice / General Practice Medicine			19	4	23	144
Psychiatry			2	5	7	69
General Pediatrics			1	1	2	32
Prince George Regional Hospital		7	159	52	218	2,470
Psychiatry		5	146	44	195	2,407
Family Practice / General Practice Medicine		1	9	7	17	35
General Pediatrics		1	4		5	25
Other				1	1	3
Prince Rupert Regional Hospital			18	3	21	65
Family Practice / General Practice Medicine			11	3	14	18
Psychiatry			5		5	42
General Pediatrics			2		2	5
Queen Charlotte Islands General Hospital			1		1	6
Family Practice / General Practice Medicine			1		1	6
St. John's Hospital		2	9	2	13	81
Family Practice / General Practice Medicine		2	9	2	13	81
Stuart Lake Hospital				1	1	3
Family Practice / General Practice Medicine				1	1	3
Wrinch Memorial Hospital			10	3	13	42
Family Practice / General Practice Medicine			10	3	13	42
Provincial Health Services Authority	8	49	438	31	526	4,966
B.C. Children's Hospital	8	49	438	31	526	4,966
Psychiatry		30	332	15	377	3,970
Paediatric Medical Subspecialty	8	10	73	16	107	803
General Pediatrics		9	31		40	191
Other			2		2	2
Grand Total	16	205	2,560	1,236	4,017	26,922
% Total Discharges	0%	5%	64%	31%	100%	

## Appendix 6: Map of Inpatient Discharges for MH & SU Reasons



## Appendix 7: HA Operated & Contracted Child & Youth Inpatient Beds in BC

Sites are listed in alphabetical order within each HA.

HA	Hospital	General Pediatric Beds	Pediatric Observation Beds	Ped ICU Beds <sup>2</sup>	Child & Youth MH Beds	Youth SU Beds <sup>3,4</sup>	Total Ped Beds	NICU Beds
IHA <sup>5</sup>	A New Tomorrow (Kamloops)					8 <sup>6</sup>	8	
	Bridge Youth Rec House (Kelowna)					14 <sup>7</sup>	14	
	East Kootenay (Cranbrook)	2					2	
	Kelowna General	10			8		18	12
	Kootenay Boundary (Trail)	4					4	
	Penticton	4					4	
	Phoenix Centre (Kamloops)					5 <sup>8</sup>	5	
	Royal Inland (Kamloops)	9			2		11	8
	Vernon	5					5	
FHA	Abbotsford Regional	12					12	10
	Burnaby						0	6
	Chilliwack General		4				4	
	Creekside Withdrawal Mgt Ctre (Surrey)					6	6	
	Langley Memorial	8					8	4
	Last Door Recovery Centre (N West)					4	4	
	Maple Ridge Treatment Centre					4 <sup>9</sup>	4	
	Ridge Meadows		4				4	
	Royal Columbian	12					12	24
	Surrey Memorial	16			20		36	32
	Traverse (Chilliwack)					20	20	
VCHA	Carlile Centre (N Van)				10 <sup>10</sup>		10	
	Lions Gate	10					10	6
	Peak House (Van)					8	8	
	Richmond		3 <sup>11</sup>				3	6
	St Paul's						0	9
	Young Bears Lodge (Van)					5	5	

<sup>2</sup> Beds have capacity for invasive monitoring, inotropic drugs, and mechanical ventilation.

<sup>3</sup> Excludes beds in home-based settings and supportive recovery beds.

<sup>4</sup> Substance use beds are funded by the HA but operated by an external agency. Exceptions: Creekside (Surrey) and Nechako (Prince George) are funded & operated by the HA.

<sup>5</sup> Excludes Recovery Range (Fort Steele), ages 19 – 24 yrs.

<sup>6</sup> Facility-based treatment, ages 12 – 18 yrs.

<sup>7</sup> 14 beds: 4 withdrawal management & 10 facility treatment, ages 12 – 18 yrs.

<sup>8</sup> Withdrawal management, ages 12 – 24 yrs.

<sup>9</sup> Ages 18 – 24 yrs.

<sup>10</sup> Concurrent disorders, 13 – 18 yrs old.

<sup>11</sup> 3 funded beds (5 physical beds) staffed by 1 RN 24/7.

HA	Hospital	General Pediatric Beds	Pediatric Observation Beds	Ped ICU Beds <sup>12</sup>	Child & Youth MH Beds	Youth SU Beds <sup>13, 14</sup>	Total Ped Beds	NICU Beds
Island HA	Campbell River	3					3	
	Comox Valley	3					3	
	Cowichan District (Duncan)	4					4	
	Ledger House (Victoria)				14 <sup>15</sup>		14	
	Nanaimo Regional	8					8	9
	Victoria General	20 (24) <sup>16</sup>		5			25	22
	Victoria Youth Empowerment Society Specialized Youth Detox					5 <sup>17</sup>	5	
NHA	Nechako Centre (Prince George)					8 <sup>18</sup>	8	
	University Hosp of Northern B.C.	12 <sup>19</sup>			6 <sup>20</sup>		18	9
PHSA	B.C. Children's Hospital	97		22	54 <sup>21</sup>		173	
	B.C. Women's						0	60
<b>TOTAL</b>		<b>239</b>	<b>11</b>	<b>27</b>	<b>114</b>	<b>87</b>	<b>478</b>	<b>217</b>

Source: Survey of CHBC Regional Coordinators, March 2023.

**Note: Several hospitals in BC do not have dedicated pediatric beds but admit children to beds on adult inpatient units. These hospitals are not included on the list above.**

<sup>12</sup> Beds have capacity for invasive monitoring, inotropic drugs, and mechanical ventilation.

<sup>13</sup> Excludes beds in home-based settings and supportive recovery beds.

<sup>14</sup> Substance use beds are funded by the HA but operated by an external agency. Exceptions: Creekside (Surrey) and Nechako (Prince George) are funded & operated by the HA.

<sup>15</sup> 14 beds: 5 child, 6 youth & 3 special care (assessment/stabilization) beds.

<sup>16</sup> Planned seasonal increase to 24 beds Oct-April. 4 beds available with increased safety and monitoring for mental health.

<sup>17</sup> Short-term residential withdrawal management program, ages 13-18

<sup>18</sup> Includes 1 detox bed.

<sup>19</sup> 4 beds have the capacity for more intensive monitoring, up to and including continuous cardiorespiratory monitoring.

<sup>20</sup> 2 beds for planned admissions and 4 for crisis stabilization.

<sup>21</sup> Includes 14 beds at Looking Glass (up to age 24), a residential eating disorders program operated by PHSA (BC Mental Health & Substance Use Services and BCCH) in collaboration with the Looking Glass Foundation.