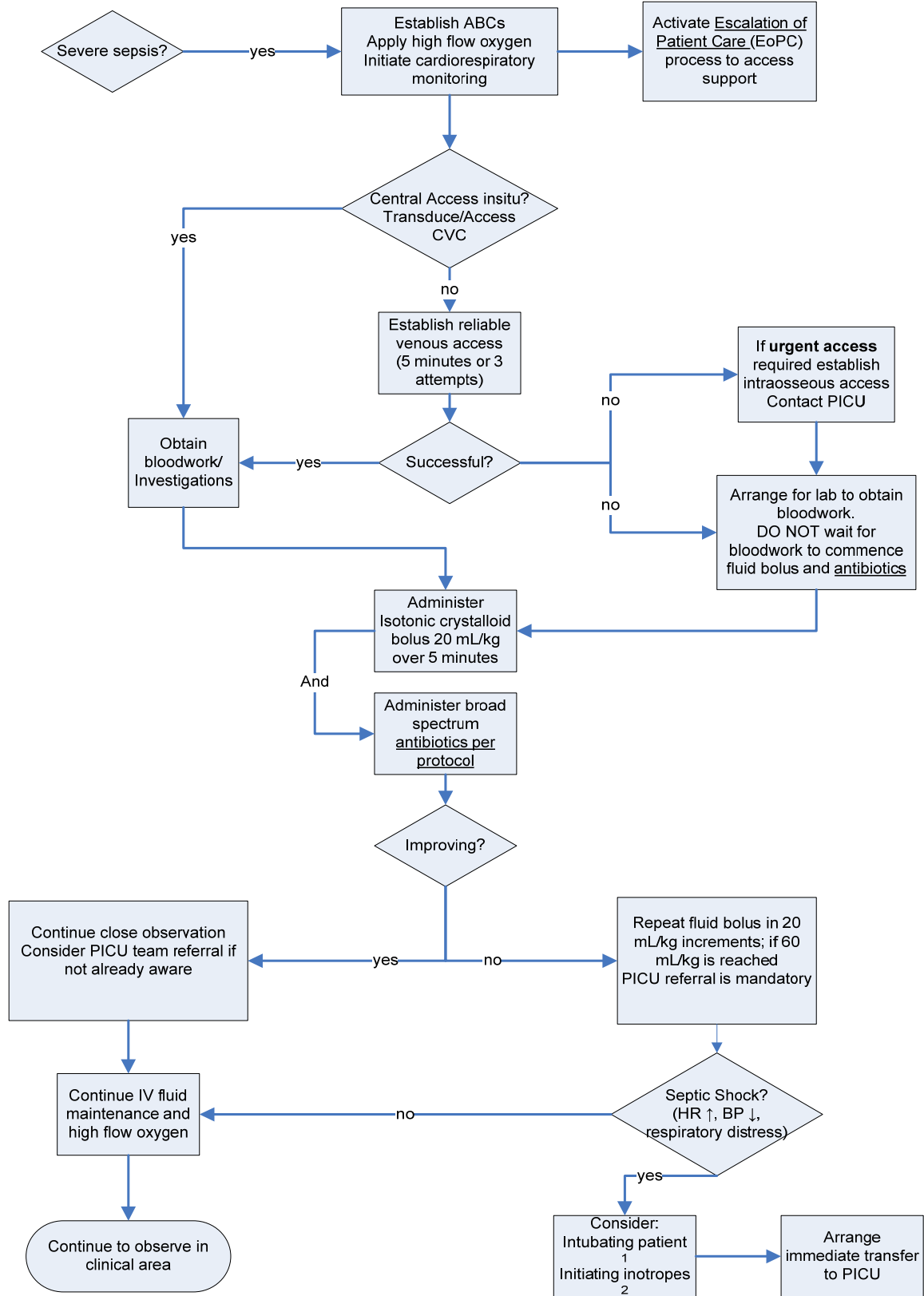


# SEVERE SEPSIS/SEPTIC SHOCK RESUSCITATION BUNDLE: HOUR 0 -1

Oct 2011

Time in Minutes

0 to 60



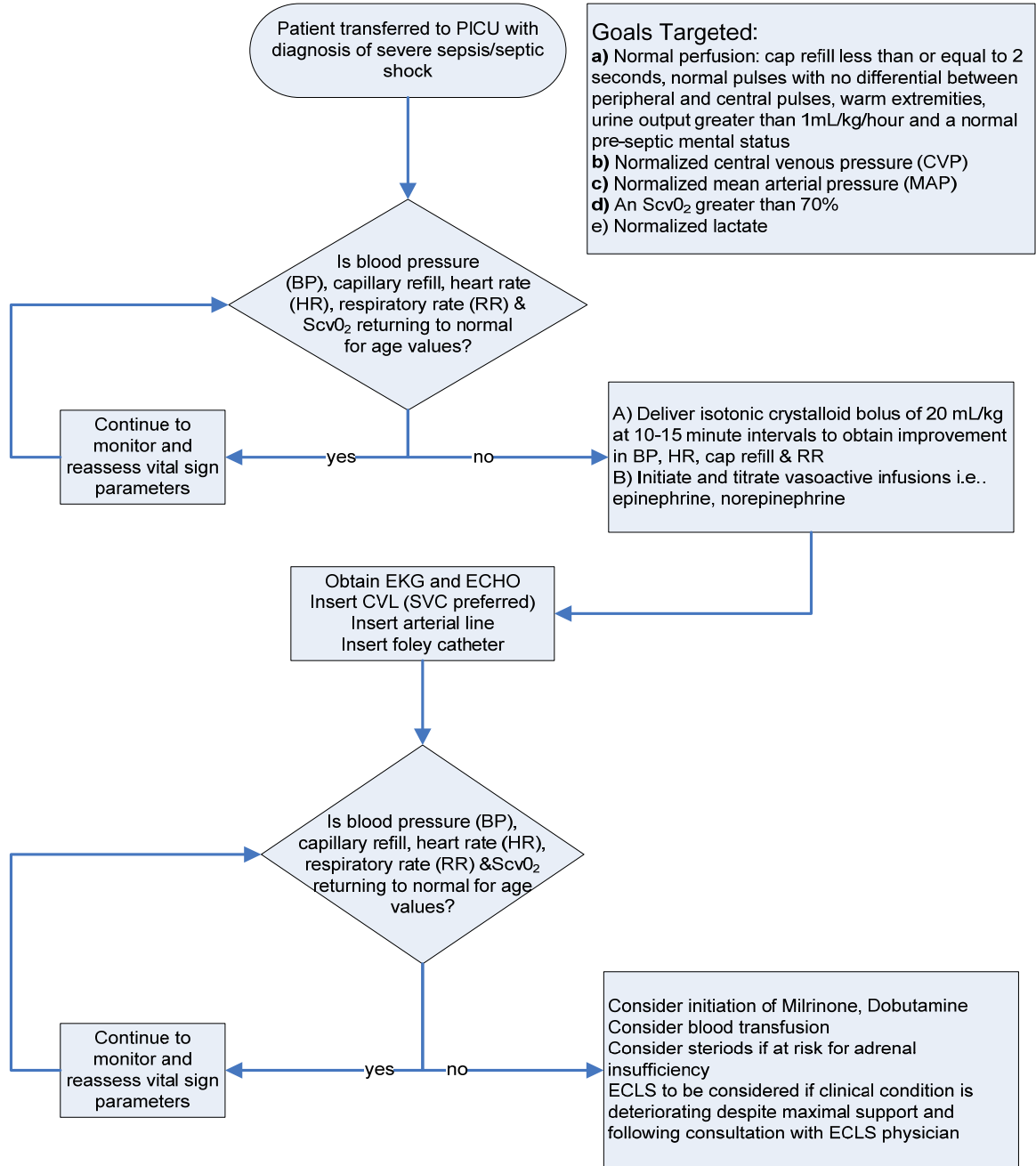
1. Recommended drugs for intubation: atropine 20 mcg/kg; ketamine 1 mg/kg; rocuronium 1 mg/kg; or succinylcholine 2 mg/kg  
 2. Recommended inotropes: epinephrine 0.01-0.15 mcg/kg/min if peripheral; 0.01-0.3 mcg/kg/min if central

# SEVERE SEPSIS/SEPTIC SHOCK MAINTENANCE BUNDLE: HOUR 1 - 6

Oct 2011

Time in Hours

1 to 6



**Goals Targeted:**  
 a) Normal perfusion: cap refill less than or equal to 2 seconds, normal pulses with no differential between peripheral and central pulses, warm extremities, urine output greater than 1mL/kg/hour and a normal pre-septic mental status  
 b) Normalized central venous pressure (CVP)  
 c) Normalized mean arterial pressure (MAP)  
 d) An ScvO<sub>2</sub> greater than 70%  
 e) Normalized lactate

ScvO<sub>2</sub>: central venous oxygen saturation  
 SVC: superior vena cava  
 Hct: hematocrit  
 ECLS: Extracorporeal Life Support